

TABLE A - TAPER LENGTHS		Regulatory Speed Limit before Work Begins (km/h)									
Taper Types (m)		≤ 50	60	70	80	90	100	110	120		
Merge Taper Length	1/4	35	55	100	190	210	230	250	280		
Lane Shift Taper Length	1/4	30	50	80	100	110	120	130	140		
Downstream Taper Length	1/4	30	30	30	30	30	30	30	30		
TCS, Signal, and Shoulder Taper Length (min. 3 devices)	1/4	5	8	15	15	15	15	15	15		
Minimum Tangent Length between Tapers	1/4	30	60	160	190	210	230	250	280		
Run-In Length on Centreline	1/4	40	50	60	60	70	80	90	100		

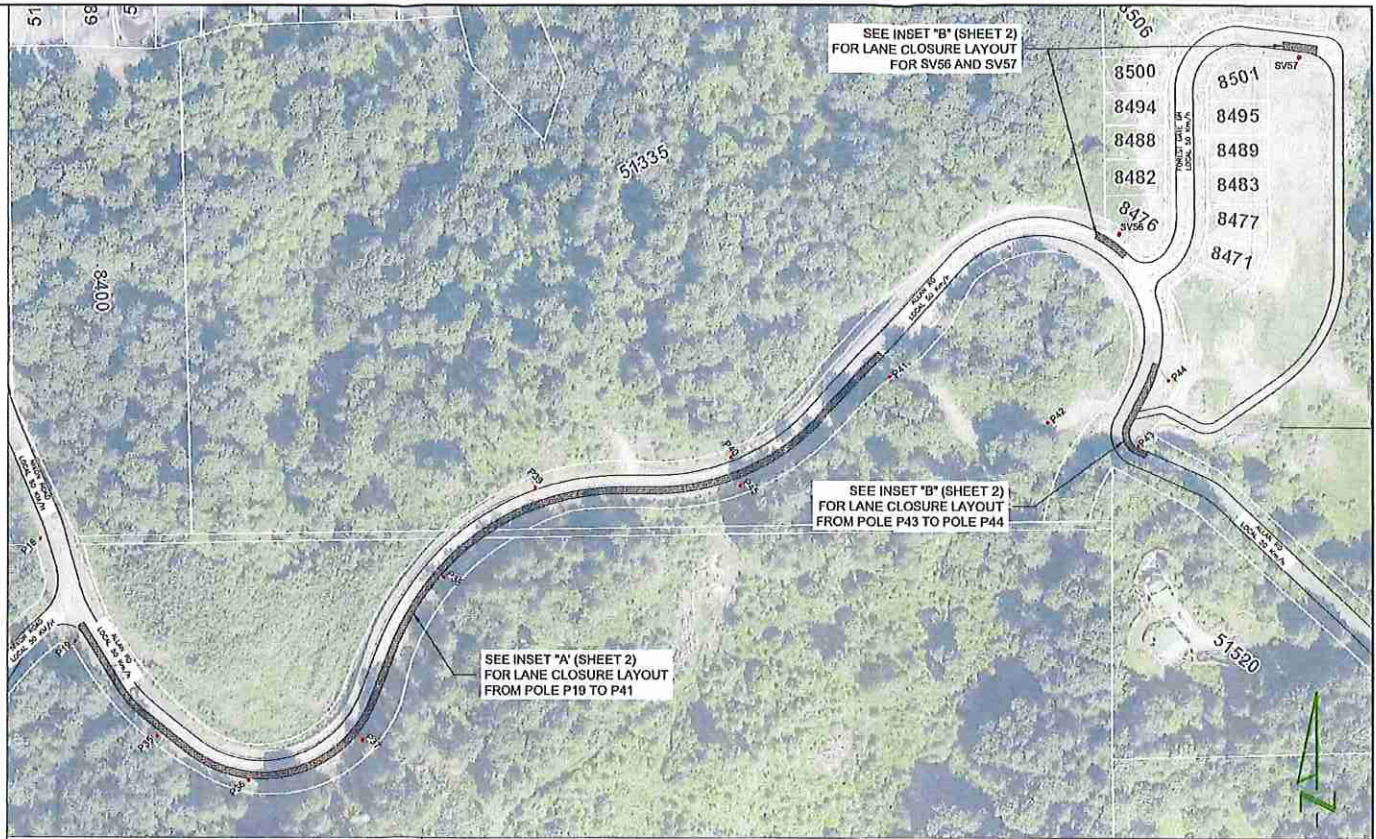
TABLE B - DEVICE SPACING LENGTHS		Regulatory Speed Limit before Work Begins (km/h)									
Device Spacing (m)		≤ 50	60	70	80	90	100	110	120		
Construction Sign Spacing	A	40	60	80	100	150	150	200	200		
Buffer Space	B	30	40	60	80	110	140	170	200		
Channelizing Device Spacing for Tapers	C	10	10	15	15	15	15	15	15		
Channelizing Device Spacing on Curves and Tangents	D	10	10	30	30	40	40	40	50		

NOTES:

1. THE WORK REQUIRING THE TRAFFIC CONTROL MEASURE INVOLVES THE PLACING FIBRE OPTIC CABLE LASHED ON AERIAL STRUCTURE FROM POLE P19 TO POLE P43 ALONG ALLAN RD, AND ON THE SIDE OF FOREST GATE DR, CHILLIWACK. THE DURATION OF USE OF THIS MEASURE WILL BE UNTIL THE WORK IS COMPLETED.
2. LANE CLOSURES ARE AS NOTED IN THIS LAYOUT.
3. TIMING OF THE WORKS WILL BE FROM 9:00AM TO 3:00 PM.
4. LOCATION OF THE WORK ZONE IS AS INDICATED ON THIS PLAN FOR CONSTRUCTION.
5. THE MEASURES SHOWN IN THIS TRAFFIC MANAGEMENT PLAN IS IN ACCORDANCE TO THE "BC TRAFFIC MANAGEMENT MANUAL FOR WORK ON ROADWAYS (2015 INTERIM)". CHANGES TO THIS LAYOUT MAY BE MADE BY THE TRAFFIC CONTROL PERSON IN CHARGE TO REFLECT FIELD CONDITIONS.
6. TEMPORARY ROAD CLOSURE FOR MAXIMUM 3 MINUTES REFER TO FIGURES ON SHEET 2.
7. PRIORITY ACCESS WILL BE GIVEN TO EMERGENCY VEHICLES.
8. ALL DIMENSIONS ARE IN METRES.

CONTACT INFORMATION:

ALEC LUNDE:
C: 778-837-4642



LEGEND	
○	Flexible Drum
●	Tubular Marker
●	Cone
⊠	Sign
⊠	Traffic Control Person
▭	Work Activity Area
▭	Work Truck
▭	Shadow Vehicle
▭	Shadow Vehicle #1
▭	Shadow Vehicle #2
▭	Buffer Vehicle
▭	Paint Truck
▭	Escort Truck
▭	Chaser Vehicle
▭	Vehicle Mounted Rear Crash Attenuator
▭	360° Flashing Light
▭	Portable Traffic Signal
▭	Barricade and Fencing
▭	Flashing Arrow Board (FAB)
▭	Flashing Arrow Board (FAB) in caution mode
▭	Dynamic Message Sign (DMS)

SITE MAP



BC ONE CALL

CALL BEFORE YOU DIG
1-800-474-8886
VANCOUVER AREA
604-257-1143



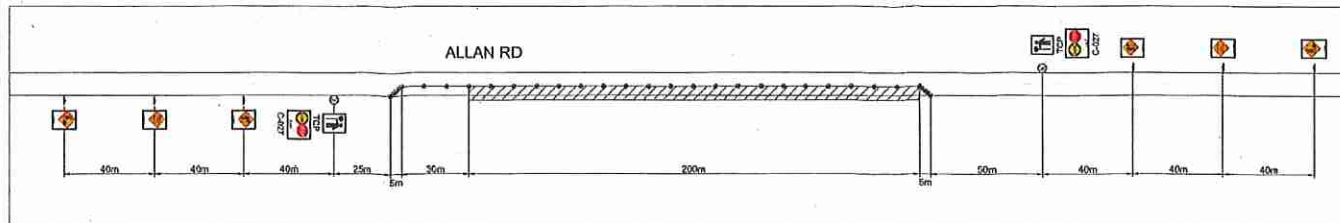
CONSTRUCTION	PERMIT	DESIGN, DM	FILE NO.	THE PROJECT PROPOSED ON THIS DRAWING IS THE PROPERTY OF TELUS
REV. DESCRIPTION	ISSUED DATE	REV. DESCRIPTION	SCALE, INT.	
REV. DESCRIPTION	REV. DATE	REV. DESCRIPTION	DATE, 07/26/17	
REV. DESCRIPTION	DATE	REV. DESCRIPTION	ASSOCIATED DRAWINGS	
REV. DESCRIPTION	DATE	REV. DESCRIPTION	1.	
REV. DESCRIPTION	DATE	REV. DESCRIPTION	2.	
REV. DESCRIPTION	DATE	REV. DESCRIPTION	3.	
REV. DESCRIPTION	DATE	REV. DESCRIPTION	REP.	

PROPOSED TRAFFIC CONTROL LAYOUT TO ACCOMMODATE TELECOM CABLE PLACING AND SPLICING		SYSTEM NAME:
ALONG ALLAN RD, AND ON THE SIDE OF FOREST GATE DR, CHILLIWACK.		2840354
		SHEET 1

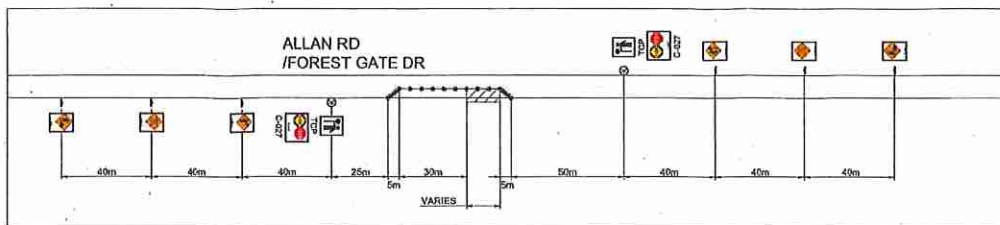
TABLE A - TAPER LENGTHS		Regulatory Speed Limit before Work Begins (km/h)											
Taper Types (m)		≤ 50	60	70	80	90	100	110	120	130	140	150	160
Merge Taper Length	L _M	35	55	160	190	210	230	250	280				
Lane Shift Taper Length	L _L	30	50	80	100	110	120	130	140				
Downstream Taper Length	L _D	30	30	30	30	30	30	30	30				
TCP, Signal, and Shoulder Taper Length (min. 5 devices)	L _S	5	8	15	15	15	15	15	15				
Minimum Tangent Length between Tapers	L _T	30	60	160	190	210	230	250	280				
Run-in Length on Centreline	L _R	40	50	60	60	70	80	90	100				

TABLE B - DEVICE SPACING LENGTHS		Regulatory Speed Limit before Work Begins (km/h)											
Device Spacing (m)		≤ 50	60	70	80	90	100	110	120	130	140	150	160
Construction Sign Spacing	A	40	60	80	100	150	150	200	200				
Buffer Space	B	30	40	60	80	110	140	170	200				
Channelizing Device Spacing for Tapers	C	10	10	15	15	15	15	15	15				
Channelizing Device Spacing on Curves and Tangents	D	10	10	30	30	40	40	40	50				

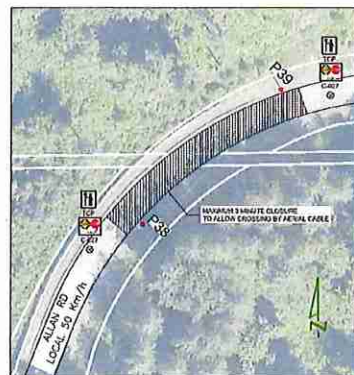
LEGEND		
○	Flexible Drum	Paint Truck
⊙	Tubular Marker	Escort Truck
●	Cone	Chaser Vehicle
⊕	Sign	Vehicle Mounted Rear Crash Attenuator
⊥	Traffic Control Person	360° Flashing Light
▭	Work Activity Area	Portable Traffic Signal
▭	Work Truck	Barricade and Fencing
▭	Shadow Vehicle	Flashing Arrow Board (FAB)
▭	Shadow Vehicle #1	Flashing Arrow Board (FAB) in caution mode
▭	Shadow Vehicle #2	Dynamic Message Sign (DMS)
▭	Buffer Vehicle	



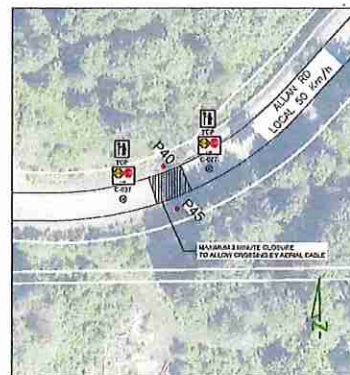
INSET "A"
TYPICAL SINGLE LANE ALTERNATING LAYOUT (50km/h ROAD)



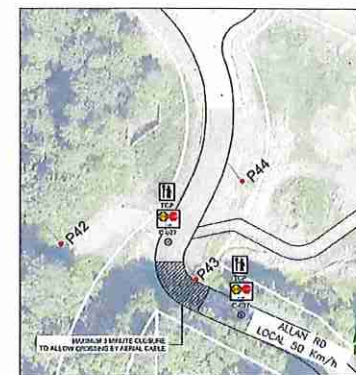
INSET "B"
TYPICAL SINGLE LANE ALTERNATING LAYOUT (50km/h ROAD)



ALLAN RD
BETWEEN P38 & 39



ALLAN RD
BETWEEN P40 & P45



ALLAN RD
BETWEEN P42 & 43

CONTACT INFORMATION:

ALEG LUNDE:
C: 778-837-4642



BC ONE CALL

CALL BEFORE YOU DIG
1-800-474-6888
VANCOUVER AREA
604-257-1840



CONSTRUCTION	PERMIT	ERSON D&M	ER: D&M	THE WORKS SHOWN ON THIS DRAWING SHALL BE THE PROPERTY OF TELUS
REV. DESCRIPTION	SUBMITTED DATE	FOR 018-1842	SCALE: NTP	PROPOSED TRAFFIC CONTROL LAYOUT TO ACCOMMODATE TELECOM CABLE PLACING AND SPLICING
REV. DESCRIPTION	RE-029 DATE		DATE: 08/01/18	
REV. DESCRIPTION	RE-038 DATE		ASSIGNATED ENGINEER	
REV. DESCRIPTION	APPROVED:	1.		
REV. DESCRIPTION	DATE:	2.		
REV. DESCRIPTION	PERMITTED DATE	3.		
REV. DESCRIPTION	CONTRACTOR:	REF:		SYSTEM NAME: 28-00564